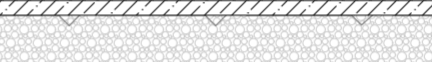
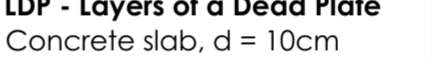



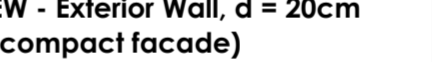
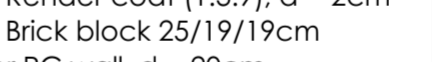



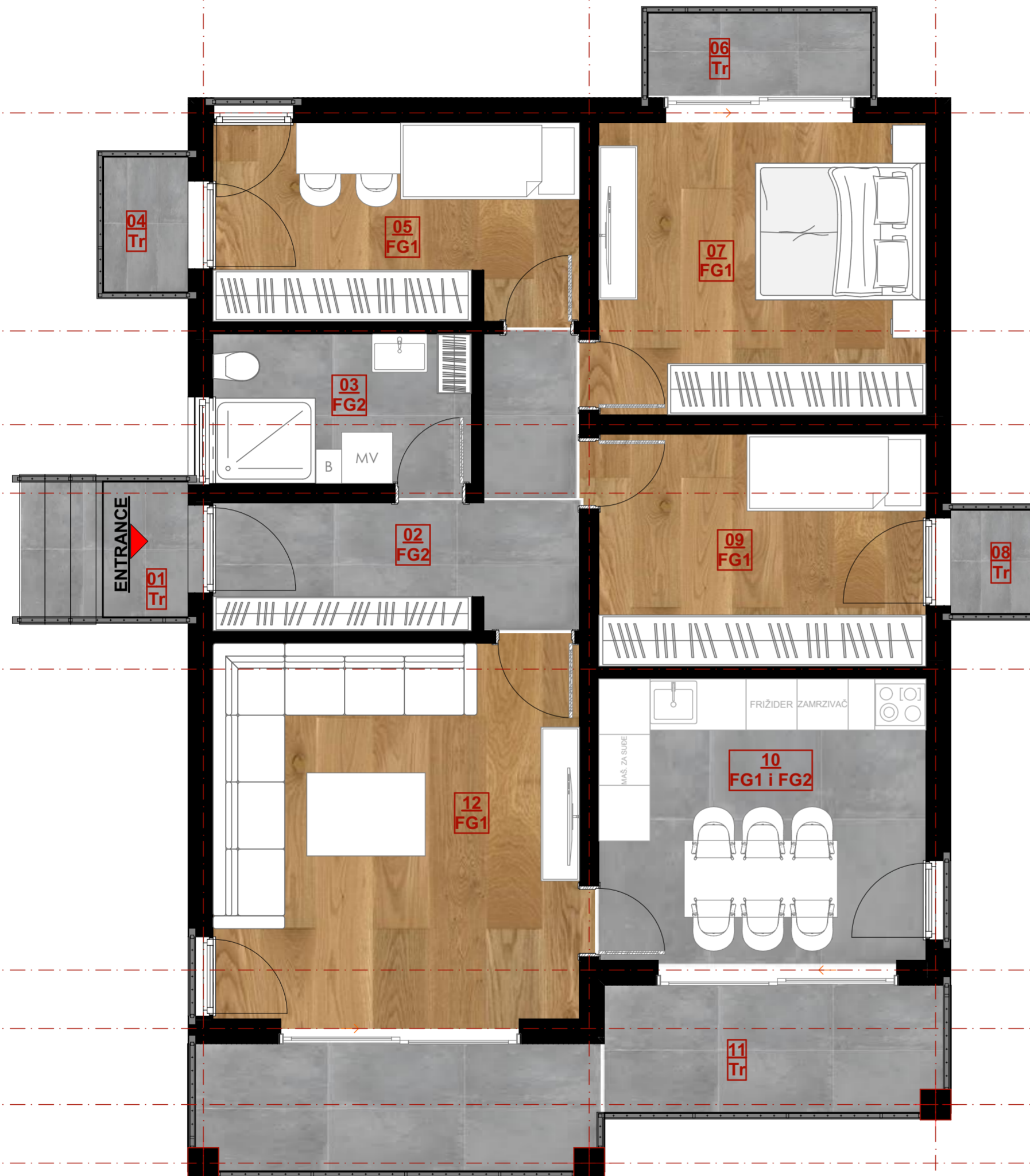
# GROUND FLOOR PLAN FURNITURE LAYOUT R 1:50

## LEGEND OF SPACES

No	Room name	Floor processing	Wall processing	ceiling processing	Area m <sup>2</sup>
01	Entrance porch	Ceramic tiles	Semi-dispersion	Semi-dispersion	3,48
02	Hallway	Ceramic tiles	Semi-dispersion	Semi-dispersion	8,62
03	Bathroom	Ceramic tiles	Ceramic tiles	Semi-dispersion	5,32
04	Terrace	Ceramic tiles	Semi-dispersion	Semi-dispersion	1,90
05	Bedroom	Parquet	Semi-dispersion	Semi-dispersion	9,94
06	Terrace	Ceramic tiles	Semi-dispersion	Semi-dispersion	3,01
07	Bedroom	Parquet	Semi-dispersion	Semi-dispersion	13,57
08	Terrace	Ceramic tiles	Semi-dispersion	Semi-dispersion	1,50
09	Bedroom	Parquet	Semi-dispersion	Semi-dispersion	10,45
10	Kitchen and d room	Ceramic tiles	Semi-dispersion	Semi-dispersion	13,19
11	Terrace	Ceramic tiles	Semi-dispersion	Semi-dispersion	13,77
12	Living room	Parquet	Semi-dispersion	Semi-dispersion	19,48
<b>TOTAL NET:</b>					<b>104,23</b>
<b>TOTAL GROSS:</b>					<b>119,37</b>

## BUILDING PHYSICS LEGEND

	<b>FG1 - Floor on Ground (Parquet)</b> - Parquet on adhesive, d = 2.2cm - Cement screed, d = 4.8cm - Sound insulation (EPS), d = 2+2cm	<b>RS - Roof Structure</b> - Roof tiles - Cross battens, 4x5 cm - Longitudinal batten for ventilation layer, 8x4 cm - Vapor-permeable, waterproof membrane - OSB board, d = 20 mm - Under the rafters, boards with d = 2.5 cm are nailed, and over the boards and rafters, a vapor-permeable, waterproof membrane is placed, over which mineral wool with d= 10 cm is installed between the rafters. - Rafters, 14x14 cm - Ridge beam, 14x14 cm
	<b>LDP - Layers of a Dead Plate</b> - Concrete slab, d = 10cm - Gravel, d = 10cm - Crushed stone, d = 40cm - Soil	<b>FG2 - Floor on Ground (Ceramic Tiles)</b> - Ceramic tiles on adhesive, d = 2cm - Cement screed, d = 4cm - Sound insulation (EPS), d = 2+2cm - Concrete slab, d = 10cm - Gravel, d = 10cm - Crushed stone, d = 40cm - Soil
	<b>Tr - Terrace</b> - Ceramic tiles on adhesive, d = 3cm - Waterproofing - Cement screed, d = 7cm - Concrete slab, d = 10cm	
	<b>Reinforced Concrete Vertical Stirrup</b>	
	<b>Reinforced Concrete Horizontal Stirrup</b>	
	<b>EW - Exterior Wall, d = 20cm (compact facade)</b> - Semi-dispersive paint - Putty mass - Render coat (1:3:9), d = 2cm - Brick block 25/19/19cm or RC wall, d = 20cm - Thermal insulation (e.g., EPS), glued and anchored, d = 8cm	<b>IW1 - Interior Wall, d = 20cm (lightweight block)</b> - Semi-dispersive paint - Putty mass - Render coat (1:3:9), d = 2cm - Brick block 20/19/19cm or RC wall, d = 20cm - Render coat (1:3:9), d = 2cm - Putty mass - Semi-dispersive paint
		<b>IW2 - Interior Wall, d = 12cm (lightweight block)</b> - Semi-dispersive paint - Putty mass - Render coat (1:3:9), d = 2cm - Brick block 20/19/12cm - Render coat (1:3:9), d = 2cm - Putty mass - Semi-dispersive paint
	<b>Adhesive</b> - Glass fiber mesh - Adhesive - Impregnating primer - Final render coat	



GROUND FLOOR PLAN  
FURNITURE LAYOUT

Attachment No. 03

Smart Invest

