

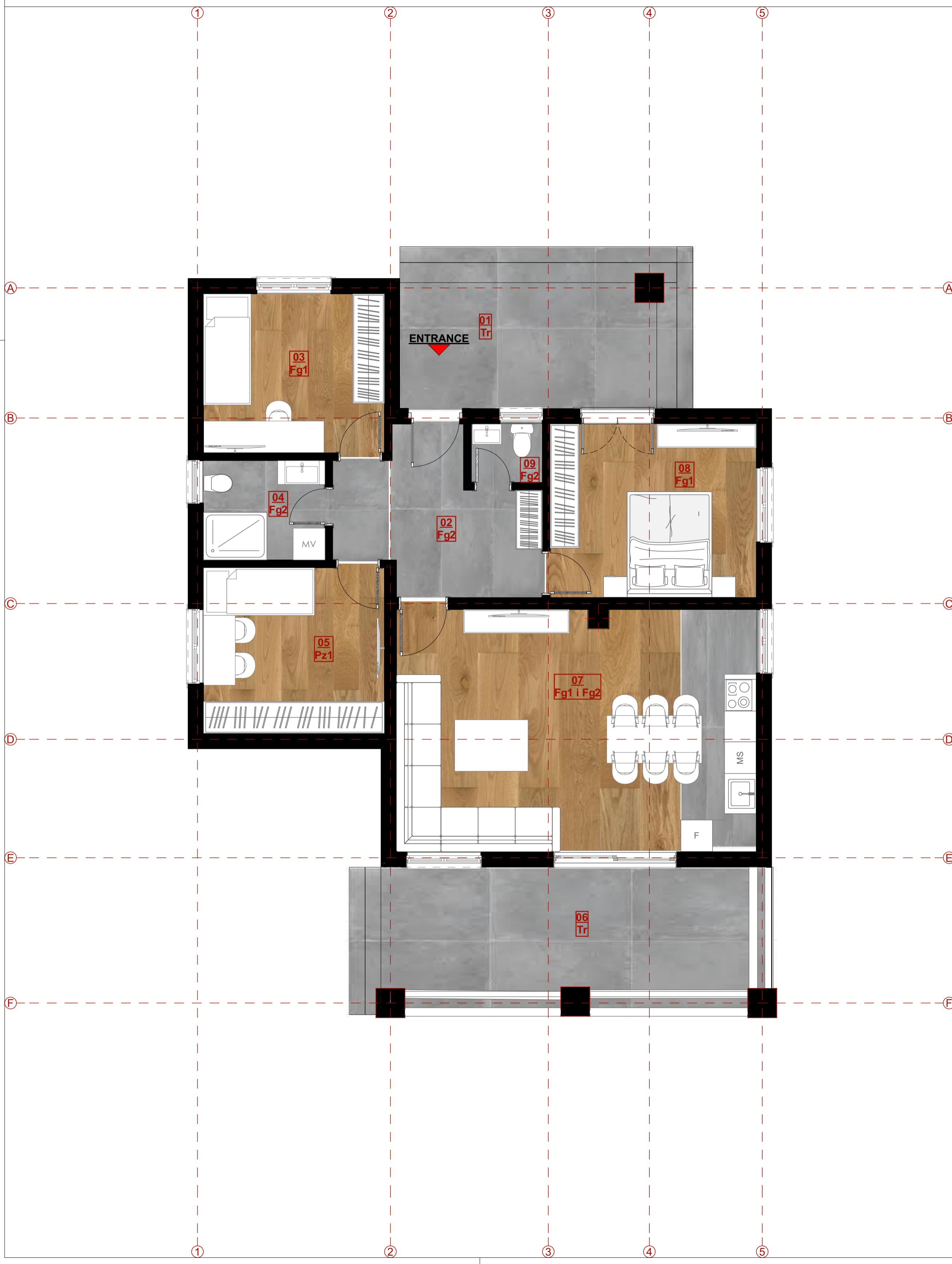
GROUND FLOOR PLAN FURNITURE LAYOUT R 1:50

LEGEND OF SPACES

No	Room name	Floor processing	Wall processing	ceiling processing	Area m ²
01	Terrace	Ceramic tiles	Semi-dispersion	Semi-dispersion	11,58
02	Hallway	Ceramic tiles	Semi-dispersion	Semi-dispersion	9,61
03	Bedroom	Parquet	Semi-dispersion	Semi-dispersion	10,29
04	Bathroom	Ceramic tiles	Ceramic tiles	Semi-dispersion	4,32
05	Bedroom	Parquet	Semi-dispersion	Semi-dispersion	10,72
06	Terrace	Ceramic tiles	Semi-dispersion	Semi-dispersion	16,32
07	Living room with kitchen and din. ar.	Parquet and tiles	Semi-dispersion and ceramic tiles	Semi-dispersion	31,25
08	Bedroom	Parquet	Semi-dispersion	Semi-dispersion	12,96
09	WC	Ceramic tiles	Ceramic tiles	Semi-dispersion	1,48
TOTAL NET:					108,53
TOTAL GROSS:					133,58

BUILDING PHYSICS LEGEND

<p>LDP - Layers of a Dead Plate</p> <ul style="list-style-type: none"> - Concrete slab, d = 10cm - Gravel, d = 10cm - Crushed stone, d = 40cm - Soil 	<p>FG1 - Floor on Ground (Parquet)</p> <ul style="list-style-type: none"> - Parquet on adhesive, d = 2.2cm - Cement screed, d = 4.8cm - Sound insulation (EPS), d = 2+2cm - Concrete slab, d = 10cm - Gravel, d = 10cm - Crushed stone, d = 40cm - Soil 	<p>RS - Roof Structure</p> <ul style="list-style-type: none"> - Roof tiles - Cross battens, 4x5 cm - Longitudinal batten for ventilation layer, 8x4 cm - Vapor-permeable, waterproof membrane - OSB board, d = 20 mm - Under the rafters, boards with d = 2.5 cm are nailed, and over the boards and rafters, a vapor-permeable, waterproof membrane is placed, over which mineral wool with d= 10 cm is installed between the rafters. - Rafters, 14x14 cm - Ridge beam, 14x14 cm
<p>Tr - Terrace</p> <ul style="list-style-type: none"> - Ceramic tiles on adhesive, d = 3cm - Waterproofing - Cement screed, d = 7cm - Concrete slab, d = 10cm 	<p>FG2 - Floor on Ground (Ceramic Tiles)</p> <ul style="list-style-type: none"> - Ceramic tiles on adhesive, d = 2cm - Cement screed, d = 4cm - Sound insulation (EPS), d = 2+2cm - Concrete slab, d = 10cm - Gravel, d = 10cm - Crushed stone, d = 40cm - Soil 	
<p>Reinforced Concrete Vertical Stirrup</p>		
<p>Reinforced Concrete Horizontal Stirrup</p>		
<p>EW - Exterior Wall, d = 20cm (compact facade)</p> <ul style="list-style-type: none"> - Semi-dispersive paint - Putty mass - Render coat (1:3:9), d = 2cm - Brick block 25/19/19cm or RC wall, d = 20cm - Thermal insulation (e.g., EPS), glued and anchored, d = 8cm - Adhesive - Glass fiber mesh - Adhesive - Impregnating primer - Final render coat 	<p>IW1 - Interior Wall, d = 20cm (lightweight block)</p> <ul style="list-style-type: none"> - Semi-dispersive paint - Putty mass - Render coat (1:3:9), d = 2cm - Brick block 20/19/19cm or RC wall, d = 20cm - Render coat (1:3:9), d = 2cm - Putty mass - Semi-dispersive paint 	<p>IW2 - Interior Wall, d = 12cm (lightweight block)</p> <ul style="list-style-type: none"> - Semi-dispersive paint - Putty mass - Render coat (1:3:9), d = 2cm - Brick block 20/19/12cm - Render coat (1:3:9), d = 2cm - Putty mass - Semi-dispersive paint



Smart Invest

GROUND FLOOR PLAN
FURNITURE LAYOUT

Attachment No. 03

